

# IBI<sup>®</sup>

INTERNATIONAL BOAT INDUSTRY

ISSUE 418 | FEBRUARY-MARCH 2017

*The business of boating*

## France In need of a revolution

[Page 22]

### ITALY ON THE UP

Primed for growth  
in 2017 as domestic  
market rebounds

[Page 34]

### GRAND BANKS

Back from the brink,  
the yard's fortunes  
have been transformed

[Page 52]



## IBI PLUS

NEWS • INTELLIGENCE • DATA

[www.ibi-plus.com](http://www.ibi-plus.com)

# A NEW ERA IN YACHTING



We deliver leading technology that's premium in innovation and performance, designed to bring yachting into a new era. Our 21st century propulsion solutions provide you with the power to design yachts that are more spacious, fuel efficient, and quiet – compared to what's been possible before. They also make your yacht do what others can't – and it's doing it with ease. Through partnership with you, we provide customized solutions that are designed, manufactured and serviced by one company. This ensures that first class support is always at hand.

**VOLVO PENTA IPS**

**VOLVO  
PENTA**



### Rupes MP330 abrasive discs

[www.rupes.com](http://www.rupes.com)

**THE MP330 IS** a new range of multi-purpose abrasive discs by Rupes. Available in a 150mm (6in) multi-hole design for vacuum compatibility, these discs feature latex-reinforced paper backing and a high-quality abrasive material. A specialised dust repellent additive, embedded into the disc surface, prevents the surface itself from premature clogging. In addition, the manufacturer has also announced that the recently launched BigFoot iBrid Nano polisher (long and short neck configuration) is now available in a new single version without battery or additional accessories.



### Radome Side Access Hatch

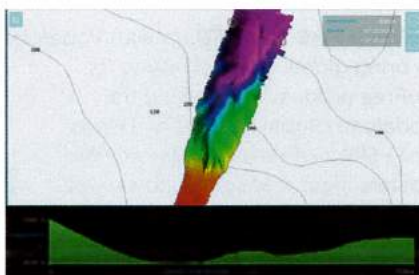
[www.livewire-connections.com](http://www.livewire-connections.com)

**LIVEWIRE CONNECTIONS HAS** introduced a new range of radome side access hatch door kits for use with Cobham Satcom VSAT and TVRO antennas. Each kit mimics the curvature of the different radome diameter sizes available (50" to 75") and provides a neat, economical, and practical side hatch access option without the need to revert to a custom-built solution. Each kit comes with a cutting template, surround bezel, door retaining lanyard, side hatch door (with pre-fitted Sea Tel style catches) and comprehensive instructions of how to fit the door.

### Wassp F3L 80kHz system

[www.enl.co.nz](http://www.enl.co.nz)

**NEW ZEALAND-BASED MANUFACTURER** Wassp has launched F3L, a new low-frequency wideband 80kHz system. The unit uses the new digital DRX hardware, the latest CDX software and utilises the backward compatible Wassp 80kHz (Chirp 68-92 kHz) transducer. The company says it will give users a full swath coverage to 450m and maximum nadir depth of 900m.



### Mastervolt intuitive system

[www.mastervolt.com](http://www.mastervolt.com)

**MASTERVOLT HAS EXPANDED** its portfolio with a new combination output interface for its CZone and a new EasyView 5 waterproof system monitor. The CZone Combination Output Interface (COI) is a compact replacement for a traditional fuse box and panel of circuit breakers when using digital switching technology. The EasyView 5 is a slim display especially designed to be used on an open console or a flybridge. Its colour touch screen has a multi-language menu. The company says the system can be easily customised.



SEND NEW PRODUCTS TO: [ibiproduts@timeinc.com](mailto:ibiproduts@timeinc.com)